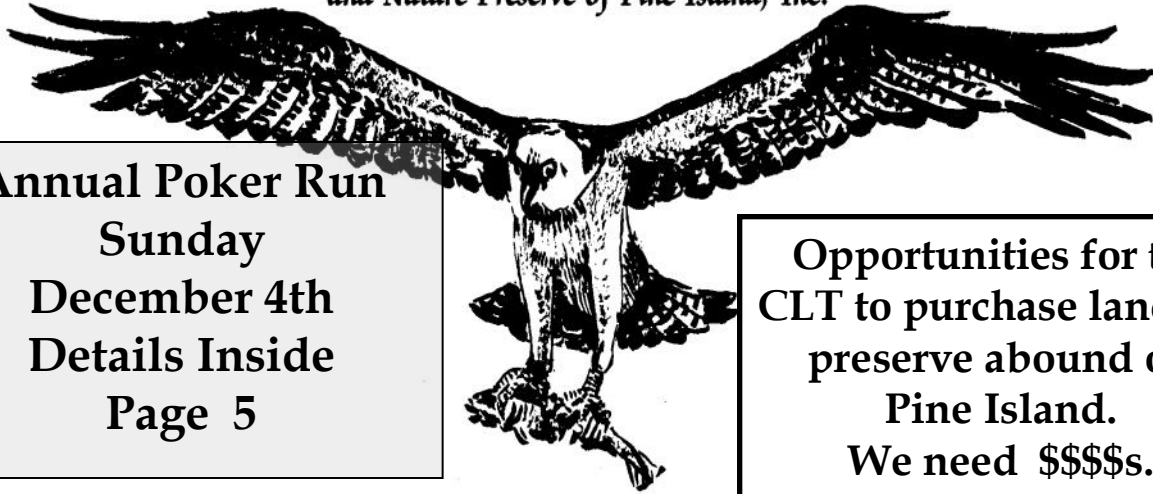


Calusa Land Trust

and Nature Preserve of Pine Island, Inc.



Annual Poker Run
Sunday
December 4th
Details Inside
Page 5

Opportunities for the
CLT to purchase lands to
preserve abound on
Pine Island.
We need \$\$\$\$s.

Newsletter #75
Founded 1976

October 2011
www.calusalandtrust.org

Fund Raising

by Ron Wesorick

283.7249

Wetlands \$1000 per acre.

In the last Newsletter we talked about the many opportunities the Calusa Land Trust is encountering. Here is a breakdown on our recent purchases and some of the newest opportunities. The downturn in real estate values that began late in 2005 has just recently created some land buying opportunities for the Calusa Land Trust. A flurry of activity began late in 2010. Here is a summary of CLT purchases since then:

Number of preserves bought:	5
Total acreage:	115.87
Total purchase price:	\$166,330
2010 Total assessed value:	\$251,990

Here is some more good news. We have just entered in an option contract for the purchase of four more properties from a single seller. The four parcels are 40, 38, 20 and 15 acres for a total of 113 acres. The two larger properties adjoin preserves we already own. The purchase price is \$1,000 per acre, or a total of \$113,000. We have two years to buy these four parcels, but we must close on at least one every six months. Our first deadline is the purchase of 40 acres for \$40,000 and a closing date of not later than March 1, 2012.

That is all of the good news. The bad news is that we are out of acquisition funds! In fact, we had to borrow \$25,000 in order to close on the last of the five purchases shown above. So now we must enter into an aggressive fundraising campaign to buy the four parcels we have under option

We need more funds to complete these transactions. These lands need to be preserved if we want to keep Pine Island as it is. Now is the time to dig deep and make an extra contribution to the Calusa Land Trust.

Mark your Calendar
2012 Calusa Land Trust Annual Meeting is set for Sunday January 22.
and
on the following Saturday, January 28 the Annual Rummage Sale.

May Purchase of 5.88 Acres Adds Key Piece to the Dobbs Preserve

The importance of acquiring inholdings and parcels that adjoin existing preserves has been mentioned previously. The original Dobbs Preserve of 69.14 acres was acquired in 1998. It is located on the south end of Pine Island east of the Tropical Homesites subdivision. Sabal Avenue borders part of the west boundary. The entire east boundary borders the open waters of Matlacha pass for over 2000 feet.

In February 2011 we acquired 2.26 acres that adjoined Dobbs at the southwest corner. This important piece provided a second road access on the south end. In May we were fortunate to purchase 5.88 acres that was a privately owned inholding at the southeast corner as shown below.



The south boundary of the new purchase is more than 1,300 feet along the north side of the canal that enters the Manatee Bay subdivision. The east boundary adjoins 12.34 acres of wetlands owned by the U. S. Fish & Wildlife Service (USFW). The north side adjoins the original Dobbs Preserve. One of the prime features is the west boundary. It is a mosquito ditch that heads about 180 feet north to the original Dobbs Preserve and then turns west toward the 2.26 acres we purchased in February. With a bit of work it might be possible to create kayak/canoe access from the uplands on the 2.26 acres to the canal that heads east into Matlacha pass.

On a hot September morning I took a kayak trip to the new parcel. The canal to the south held large numbers of mullet but the highlight of the paddle was two groups of rolling juvenile tarpon. The original Dobbs, the two additions, and the USFW parcel to the east total just under 90 acres of beautiful wetlands preserve bordering the pristine waters of Matlacha pass.



Mark your calendars now for the Great Calusa Blueway Paddling Festival.

Thursday November 3rd through Sunday November 6th, 2011

This year the festival will be based on the Sanibel Causeway Island "A" with races, paddling tours and numerous other activities. Pine Island will host Blueway activities Saturday, November 5, with the annual Calusa Blueway Kayak Fishing Tournament and the annual Taste of Matlacha & Bluegrass for a Blueway. Both are in Matlacha Park. For additional information about the festival activities, log onto: www.calusabluewaypaddlingfestival.com.

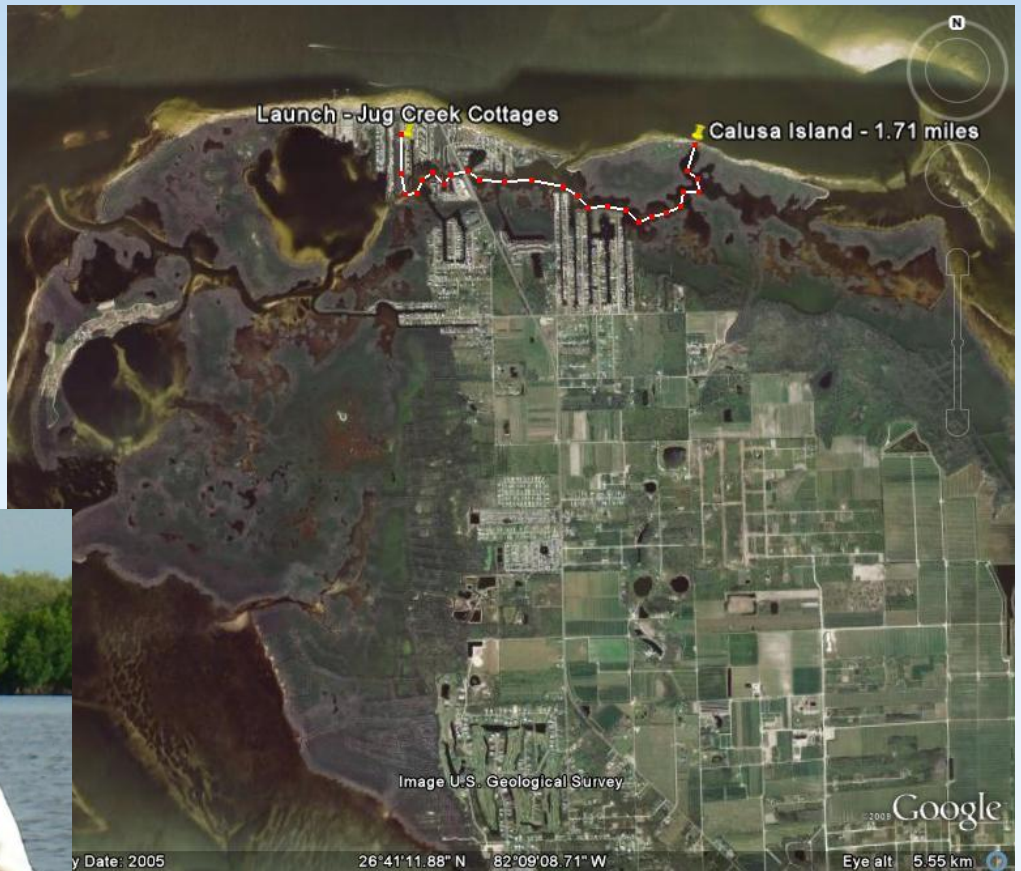
To celebrate this event, the Calusa Land Trust will once again offer a guided paddling trip to one of our most interesting preserves on:

Saturday November 5, 2011 from 10:00 am to 2:00 pm.

We will depart from Jug Creek cottages in Bokeelia and paddle about a mile and a half through protected Jug Creek to Calusa Island where you can then join us on a guided hiking tour of this beautiful island preserve. This is the island that forms the northeast border of Jug Creek in Bokeelia.

Since this is also a fund raiser for us, a \$20 contribution per person is suggested for the trip. Bring your own canoe or kayak. If you don't have your own boat, kayaks will be available to rent from the Tropic Star if you let us know in advance.

We always have a big turnout for this event and everyone has a great time.



Contact Ed Chapin: 239-218-7531 or
ECalusaEd@CalusaLandTrust.org
for reservations and additional information.

Treasures of the Trails for October 2011: Tropical Puff at St Jude's Trail



Photo by Brian Cotterill

Tropical Puff (*Neptunia pubescence*) is a descriptive name for this native perennial with its small globe shaped yellow flowers and feathery leaves. The flowers are about 3/4 inch in diameter and bloom from spring to fall, often in clusters, on this low growing herb. Tropical Puffs are found in pinelands, open coastal uplands and disturbed lands from Florida to Texas. They like moist, well drained sandy soil and can live well with low nutrients, but can't tolerate being flooded by saltwater for very long. Tropical Puff is in the Pea family and has a brown flattened legume sea pod that is about 1 inch long, which splits to release pea-like seeds. The plant is used in habitat restorations and butterfly and wildflower gardens and is a larval host plant for some butterflies, including the Ceranus Blue. It's a sensitive plant and the leaflets close when touched. Next time you are hiking along the St. Jude's Trail, watch for Tropical Puff near the trailhead set off the path in the sun.

Corporate Gift Matching Programs

Many larger corporations have programs where they will match employee donations to eligible charities. The Calusa Land Trust qualifies for these matching contributions. If you are an employee or retiree of one of these corporations, remember to follow up and ask for the matching gifts for your recent and future donations. This is a great way to augment your charitable giving and make a significant impact on CLT funds.

Great Calusa Poker Run Coming in December

First Fund Raiser of the 2011-2012 Season

The Calusa Land Trust and Pine Island Boat Club invite everyone to participate in their Annual Poker Run on Sunday December 4th. Following last year's format, you can draw your lucky poker hands at seven stations accessible by boat or land. Everyone young or old can boat, drive, kayak, walk, run, or take golf carts to enjoy the day and have a chance to win cash prizes. As before, we will finish up at Woody's Waterside in St. James City to eat, drink, and socialize while waiting for the winning poker hand to be determined.

In addition to all participants having an enjoyable day on the water and on Pine Island, all proceeds will be donated to the Calusa Land Trust and Nature Preserve of Pine Island to help procure and preserve environmentally sensitive land.

The goal of The Great Calusa Poker Run is to enjoy the day and collect poker hands at various locations - - speed of completion is not important as long as you draw the 7th card at Woody's before 3:00. Each ticket (you can buy as many as you wish) is carried to 6 dealer locations around Pine Island Sound and St James City where a card is drawn and entered on your ticket(s). The 7th and final card is drawn at Woody's. If you can't participate in the Run, your tickets may be carried by someone else. You do not have to be present to win. Best Poker hands will win cash prizes of \$1000 (first), \$350(second), \$150 (third). There will also be a losers drawing for \$ 100 (However you must be present to win). Tickets will be available at Woody's Waterside Pub in St. James City and from various sellers starting in October. For more information, or to purchase tickets call Ron/Pink Wesorick at 283-7249, or Tom/Debbie Drews at 283-2120

ALL PROCEEDS FROM THE POKER RUN BENEFIT THE CALUSA LAND TRUST

www.calusalandtrust.org

Completed Work Parties

Saturday July 10 saw six dedicated volunteers work at Baxley Preserve. We found a lot of Brazillian Pepper and Melaluca and Australian Pine. Skeeters were on attack so the amount of work was limited. We needed to survive so we left early but will return.

Saturday September 10 at Saint James Creek Preserve a dozen or so hardy souls again defend agains bugs while clearing invasives and neatening up the trail. It was hot to say the least.

Prefer to receive this
Newsletter by E-Mail?

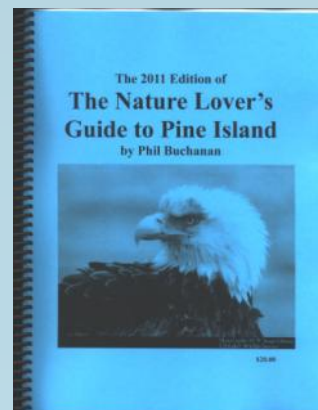
Just let us know by sending your
E-Mail address to
info@calusalandtrust.org

Hot Off the Press

The newly revised and updated version of the ever popular "The Nature Lover's Guide to Pine Island" is now available from the Calusa Land Trust.

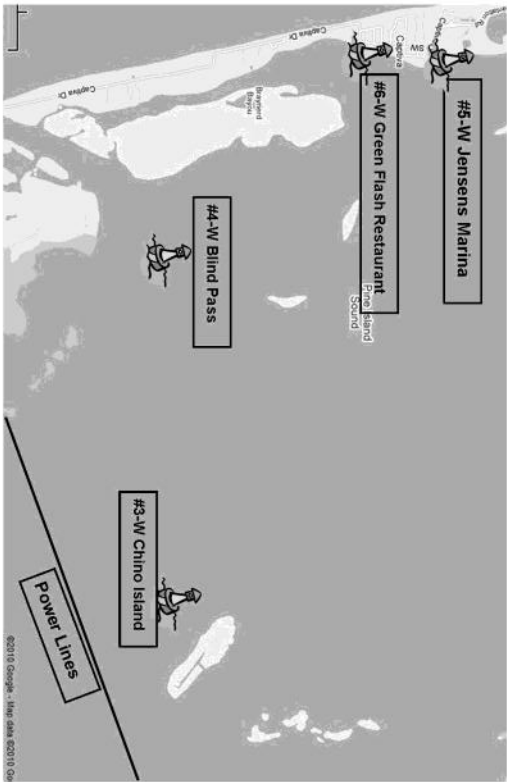
Calusa Land Trust's past President, Phil Buchanan spent the summer updating all sections of the Nature Guide and it is better than ever.

You can own your own copy of the Guide for \$20.00 and \$5.00 of each purchase stays at the CLT. Call our Secretary Rubye Woodhead at 239-283-1288 or Email info@calusalandtrust.org to get your copy.



POKER RUN MAP

All Players must go to one of each numbered station (i.e. #4-W or #4-LW, but not both number 4's). You may mix Water and Land/Water stations, but must stop at only one number. Stations do not have to be done in order.



- Bike, Walk, Drive or Boat to these stops.
- #1-LW 4111 Gait Island Ave.—Airport Canal—Bob & Bonnie Kellen—Land/Water
 - #2-LW Pine Island Shores—2063 Macadamia Ln—Pink & Ron Wesorick—Land/Water
 - #3-LW Ragged Ass Saloon—3421 Stringfellow—Monroe Canal—Land/Water
 - #4-LW 3047 Skipper Lane—Judy & Woody Woodruff—Land/Water
 - #5-LW Waterfront Restaurant—2131 Oleander—Henley Canal—Land/Water
 - #6-LW 3832 Cherry Ln.—Linda & Ron Good—Land/Water
 - #7 Woody's Waterside 3051 Stringfellow—Monroe Canal—LAST STOP FOR ALL
- L=Land W=Water

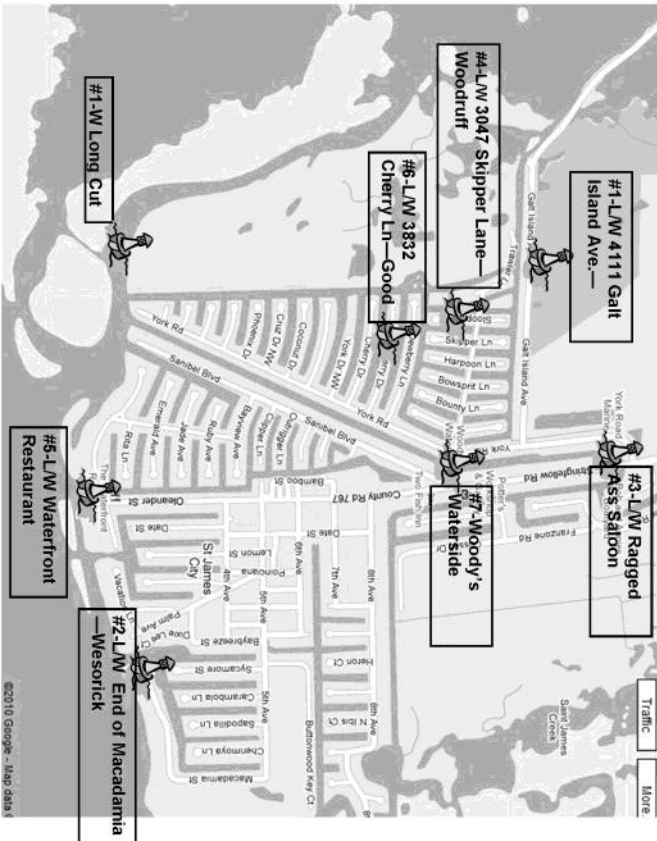
The Calusa Land Trust and The Pine Island Boat Club thank you for your participation.



2011 Poker Run Dealer Stations



- Boat to these stops:
- #1-W Long Cut—Water
 - #2-W/L Pine Island Shores—2063 Macadamia Ln—Pink & Ron Wesorick—Water/Land
 - #3-W Chino Island—Water
 - #4-W Blind Pass—Water
 - #5-W Jenssens Marina, Captiva Island—Water
 - #6 W Green Flash Restaurant, Captiva Island—Water
 - #7 Woody's Waterside 3051 Stringfellow—Monroe Canal—LAST STOP FOR ALL
- L=Land W=Water





Calusa Land Trust & Nature Preserve
of Pine Island, Inc.
P.O. Box 216
Bokeelia, Florida 33922

**ANNUAL
POKER RUN
DEC 4th**

Ranger Report Ed Chapin, Chief Ranger Cell 239-218-7531
ecalusaed@calusalandtrust.org

Peter Ordway Mangrove Adventure Series

The ever popular Peter Ordway Mangrove Adventure Paddles will begin on **Sunday October 30**. We will be going off Island to Fish Eating Creek. Paddlers will meet at 8:30 at Winn Dixie and return after 3pm. **Reservations for this adventure are a must.**

Saturday November 5 Calusa Island Paddle and Calusa Blueway Festival
10:00 to 2:00 Reservations required for this paddle also.

Saturday December 3 Paddle to St James Creek Preserve. Watch for an E-Mail and check the web for more details.

3 more paddles in 2012 watch for details in the December Newsletter and in you E-Mails.